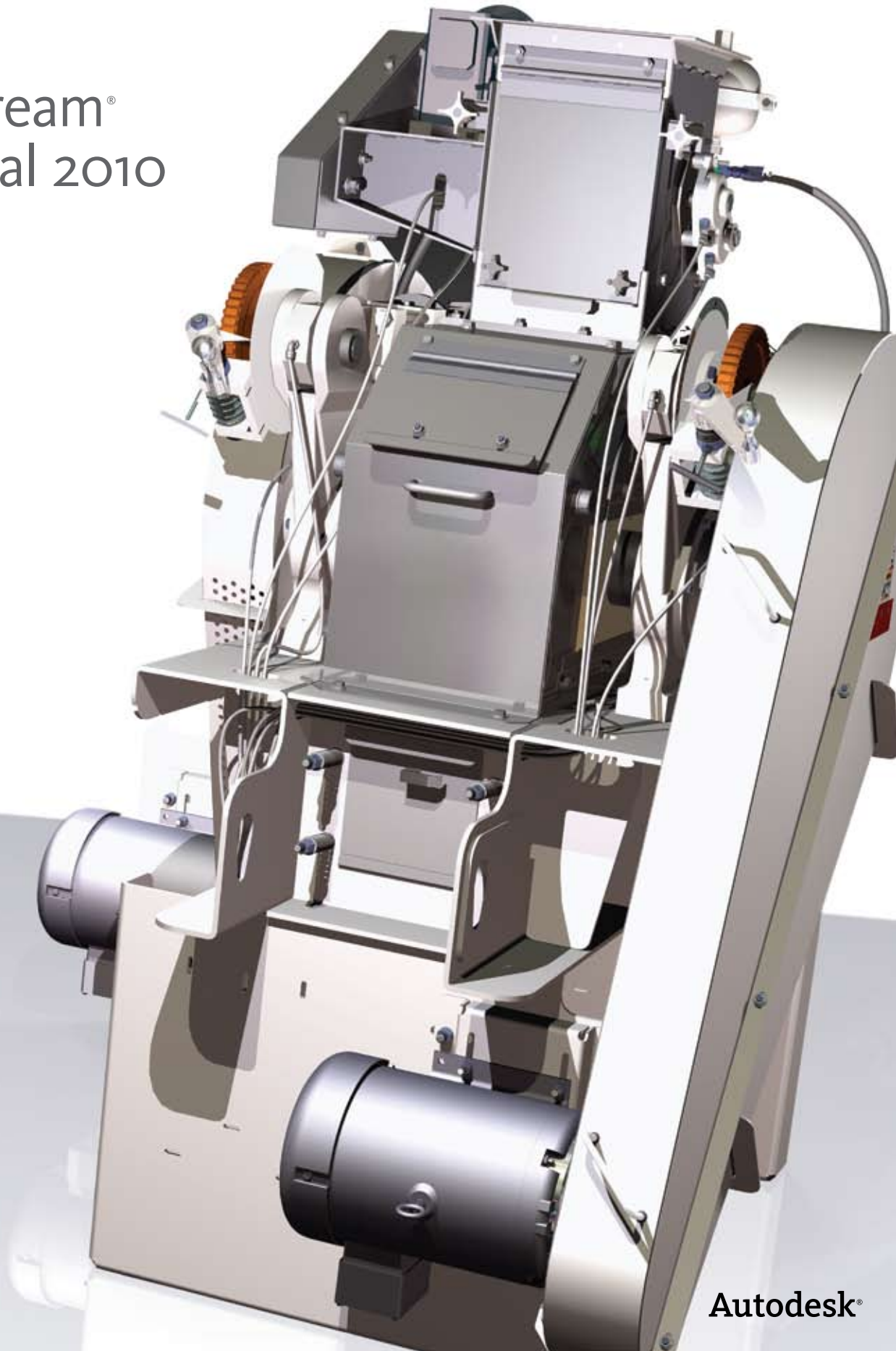


Technical What's New

Autodesk®

Productstream®
Professional 2010



Technical What's New

Contents

Managing the Digital Prototype

'In CAD'	2
Dynamic Data Card	2
Open Drawing	3
Inventor Shrinkwrap Assembly Support	3
Inventor Layout Design Support	3
Inventor Simulation	3
Integrated Data Management Capabilities within Inventor Browser	3

Promote Productivity

Optimized Data Reuse	4
Synchronize Documents for Up-to-Date Print and Release Information	4
Markups for AutoCAD Drawings	4
Reporting	5
Virtual Component in AutoCAD Mechanical	5

Customer driven Enhancements

Performance	5
Installation and Licensing	5
User Interface Enhancements	6
Preview Enhancements	6

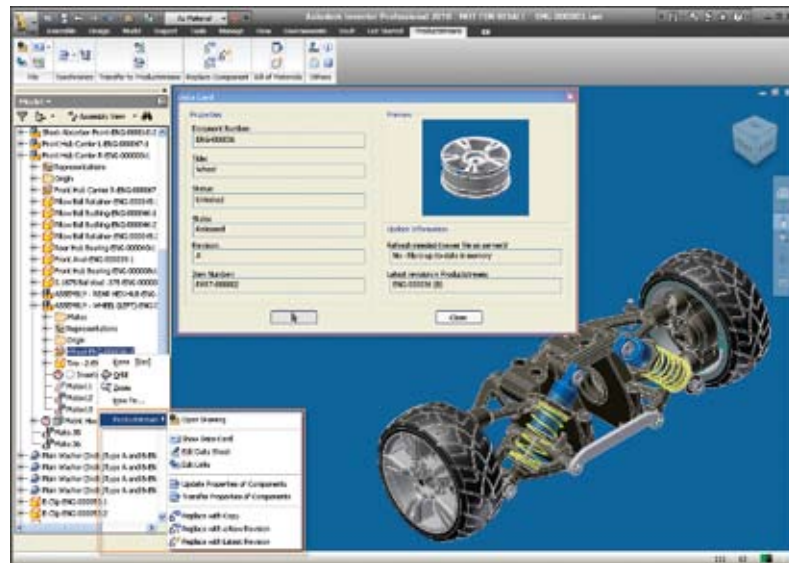
Learn More or Purchase

Subscription	6
Feedback	6

Managing the Digital Prototype 'In CAD'

Autodesk® Productstream® Professional software continues to provide the industry's best data management integrations with Autodesk design software.

With this release, the primary focus has been on improving integration with Autodesk® Inventor® software by enabling you to benefit from data management capabilities without disruption to your natural design workflows. In addition, all data associated with the digital prototype is captured and managed effectively to help ensure time saving throughout the product development process.



Dynamic Data Card

Quickly access important data management information directly within Autodesk® Inventor® with the new Data Card functionality, helping save time and help ensure data accuracy.

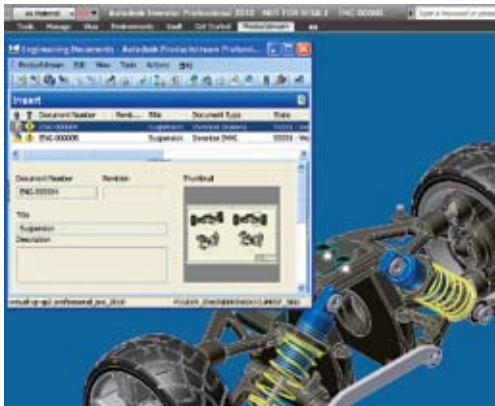
The Data Card is a smart, dynamic window that makes common data management information, such as document numbers, locked state, and revision information readily available. The Data Card has the ability to identify whether a component needs to be reloaded (refreshed) and can also be opened and positioned out of the way of the model. Finally, the Data Card will show the appropriate data dynamically as you select components in the graphics window or within the Inventor browser.



Technical What's New

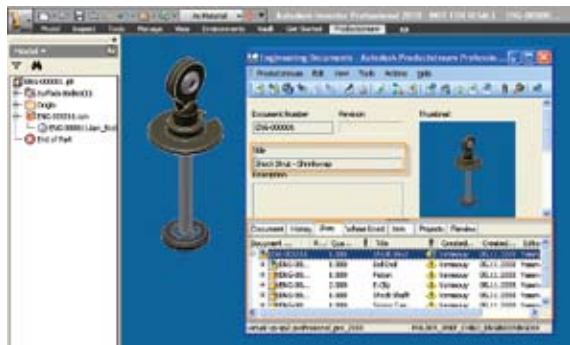
Open Drawing

Productstream Professional integrates the new Autodesk Inventor command Open Drawing by accessing the intelligence within the database to open the correct related drawing without having to apply any restrictions on users such as requiring identical file names or storing the model and drawing in the same folder. Additionally, if there are several drawings related to the model, a dialog that lists those related drawings helps you quickly find the correct drawing.



Inventor Shrinkwrap Assembly Support

Productstream Professional supports the new 2010 Inventor Shrinkwrap feature to manage large assemblies. It supports assembly workflows and integrates commands such as Create Shrinkwrap, allowing engineers to take advantage of the new Inventor functions while ensuring their work is safely captured and properly stored in Productstream Professional.



Inventor Layout Design Support

Productstream Professional supports new Inventor 2010 features such as Layout Design and Multibody and supports new Inventor workflows such as Make Part or Make Component commands to derive sketch block instances into part or assembly file component instances. In addition, the Make Part command can be used with the new Solid Bodies features to quickly produce multiple parts from a single multibody file and place them into an assembly.



Inventor Simulation

Inventor 2010 offers a new integrated simulation environment for motion simulation and finite element analysis of both parts and assemblies. With Productstream Professional, you can manage all "Inventor FEA References" when the part or assembly is saved.

Integrated Data Management Capabilities within Inventor Browser

As engineers spend most of their time working within the design applications, easy access to commonly used commands is important. The most commonly used Productstream Professional commands have been integrated within the Inventor Browser. Commands such as Edit Links or Replace with Latest Revision can be used on a component level. This allows you to revise and lifecycle a design within Autodesk Inventor, resulting in faster cycle times and better quality engineering data.



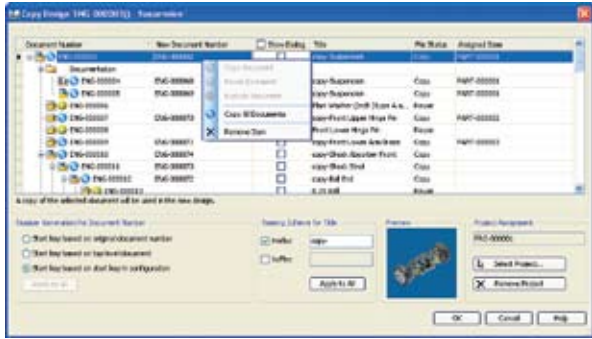
Technical What's New

Promote Productivity

You don't need to recreate the wheel. Productstream Professional includes new tools that help you reuse data and minimize rework, so you can develop products faster. Instead of starting a complex model or drawing set from scratch, use a similar digital prototype as a starting point for a new design. In addition, Productstream Professionals added capabilities are designed to let you manipulate design files without breaking application-specific links by maintaining design integrity and saving hours of manual cleanup work.

Optimized Data Reuse

Reducing the time spent manually recreating or duplicating complex models and drawing sets by optimizing data reuse and save hours of design time. Productstream Professional lets you copy a digital prototype, including all related files and documentation, for reuse in a new design. This process will create a new design set and provides the ability to configure which files are reused or copied, along with the ability to specify a new name and assign items and projects.



Synchronize Documents for Up-to-Date Print and Release Information

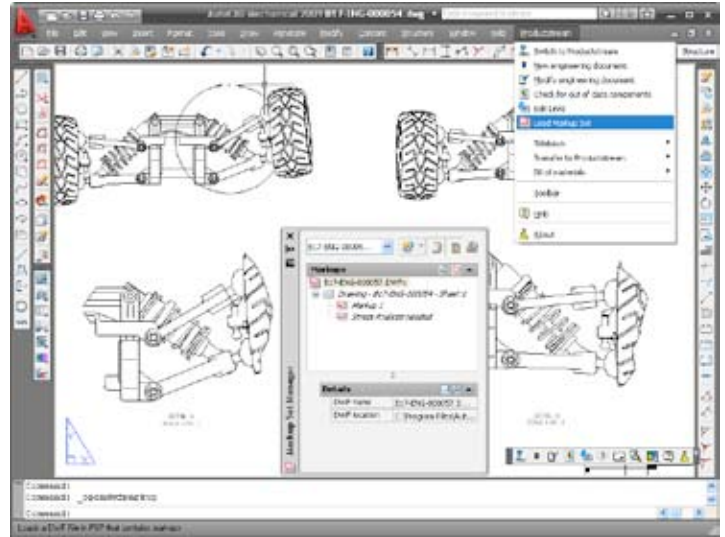
Ensure up-to-date file information and data integrity as the basis for processes such as Release and Print. Productstream Professional delivers a new capability to update a whole assembly or drawing, including all iProperties and browser names. Simultaneously, Productstream Professional can launch the Rebuild All Inventor functionality. This enhanced functionality helps you identify released or migrated files automatically and accurately manage them. In addition, you may offload action to the Jobserver, as updates may take longer for large assemblies.



Markups for AutoCAD Drawings

Productstream Professional 2010 introduces the ability to capture and manage markups files for AutoCAD drawings. Markups provide an efficient way to track feedback in a graphical way for any document. Using text and graphics allows you to accurately describe any issues and actions that need to be taken. From within Productstream Professional, you can create a new markup document for the drawing or model. Autodesk® Design Review tools are used to perform the markup activities. Multiple markups can be created to track different issues for each document.

With AutoCAD, users can open a markup file and overlay it on the open drawing. The markup feature has a variety of uses. For example, a reviewer can clearly and graphically show reasons for rejecting a document, and the designer who receives the rejected document can then easily understand and fix any potential problems. This expedites communication and greatly improves documentation of engineering changes.

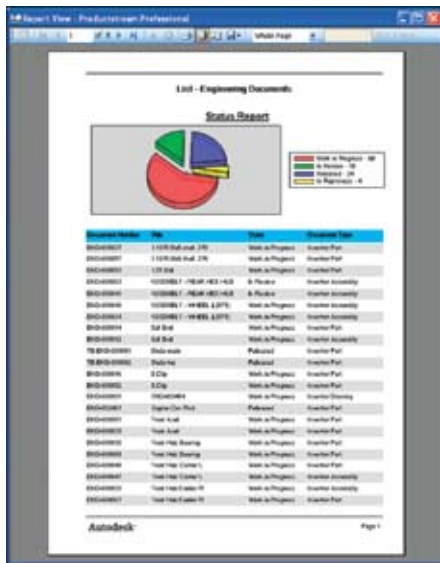


Technical What's New

Reporting

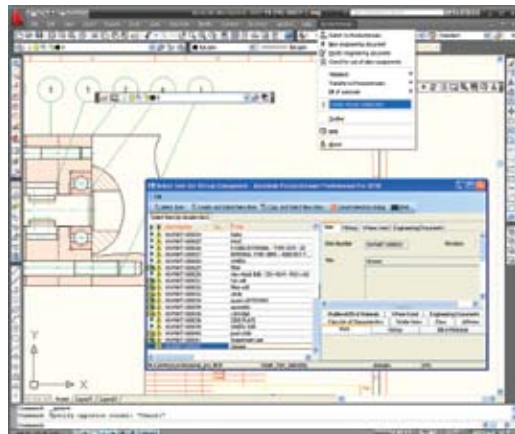
Rapidly generate reports to gain visibility into engineering productivity, design progress, and data evolution. Develop standard reporting templates, making it easier to access and analyze critical data. Analyze data points such as average time to close engineering changes, number of changes requested by department, average cost per revision.

With this release Productstream Profession is now integrated with Microsoft's reporting engine. Easily create and customize new templates to your specific needs with Productstream Professionals modern and flexible workflow.



Virtual Component in AutoCAD Mechanical

Quickly and easily complete a part list for a drawing using Productstream Professional's item information. With this release a new command, Virtual Component, is now available within the Productstream menu. This feature makes it possible to insert a Productstream Professional item as a part reference into the CAD BOM because the same dialogs used in Autodesk Inventor integration are used to create a virtual component.



Customer driven Enhancements

In every release, the core technology of Productstream Professional is improved to stay in step with customer and technology advances. In this version, Autodesk has continued to invest in further enhancements to quality and performance of the product, as well as revising the installer framework to the standard Autodesk installer and supporting the latest Microsoft releases. In addition, a continued investment in improving product usability results in better workflows.

Performance

Enjoy faster navigation when you sort, filter or search through managed data. Enhancements include substantially increased performance for many of the most common Inventor file handling functions such as open, place, replace, or bill of material transfer. In addition, the speed of data handling during engineering processes, like release documents, is now much faster.



Installation and Licensing

Improved administrator tools include use of the standard Autodesk installer used in other Autodesk products such as AutoCAD and Autodesk Inventor. In addition, the install framework supports the deployment capability, which can be used in the same manner for Productstream Professional as with other Autodesk applications.

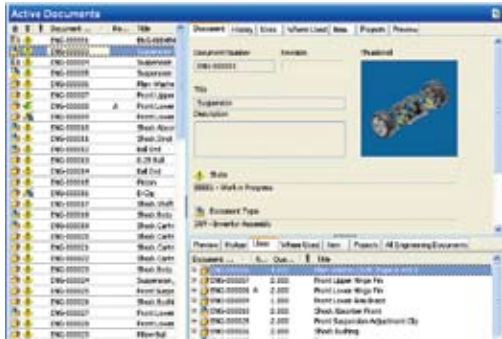


Technical What's New

User Interface Enhancements

You now have a quick and visual way to identify, access, and act on the data you are looking for.

Productstream Professional lets you view a preview of design data from within the datasheet, saving time by reducing the time typically spent navigating through data by helping you identify the information you need more quickly. Additionally, the input forms are now resizable. This helps you during customization by exposing additional properties in the input forms more easily.



Preview Enhancements

Document contents can be viewed directly in Productstream Professional using the in-tegrated thumbnail image preview function. This enables easy navigation within Productstream Professional without the need to open the file in the viewing application.

With this release, Preview functionality has been improved to make it easier and faster to access design data. Standard Productstream Professional behavior now can quickly display a thumbnail preview of the design file and also provides the ability to easily load or update the corresponding DWF file. In this release, enhancements have been made to make the application more robust and only one instance of the Autodesk Design Review will load in the Productstream Professional window. The toolbar has been simplified so that more commonly used commands, such as zoom and rotate, are easily accessible and can be displayed for quick access. In addition, a native viewer has been integrated for raster formats like tiff, gif or jpg.



Learn More or Purchase

Stay ahead of the competition with Autodesk's practical approach to data management. For more information, visit www.autodesk.com/

Subscription

Log in to the Subscription Center to receive product updates, log and view support requests, or take eLearning courses. A valuable component of Autodesk® Subscription, eLearning provides a continually expanding curriculum of short training exercises. For more information on extending the power of your data management technology, visit www.autodesk.com/subscription

Feedback

Autodesk Vault customers can interact with the Autodesk Vault development team through several avenues. For example:

- Keep up to date on what is happening in your Industry, stay in touch with other industry professionals, and take advantage of a host of online resources at the Autodesk Manufacturing Community Portal at <http://mfgcommunity.autodesk.com/>
- Talk with your Autodesk Authorized Reseller and support staff

Your input is crucial to our success, and we look forward to receiving your comments.

For more information on making the most of your software investment, visit www.autodesk.com/consulting

Purchase Autodesk Vault Manufacturing or other Vault products through your Autodesk Authorized Reseller. To locate the reseller nearest you, visit www.autodesk.com/reseller